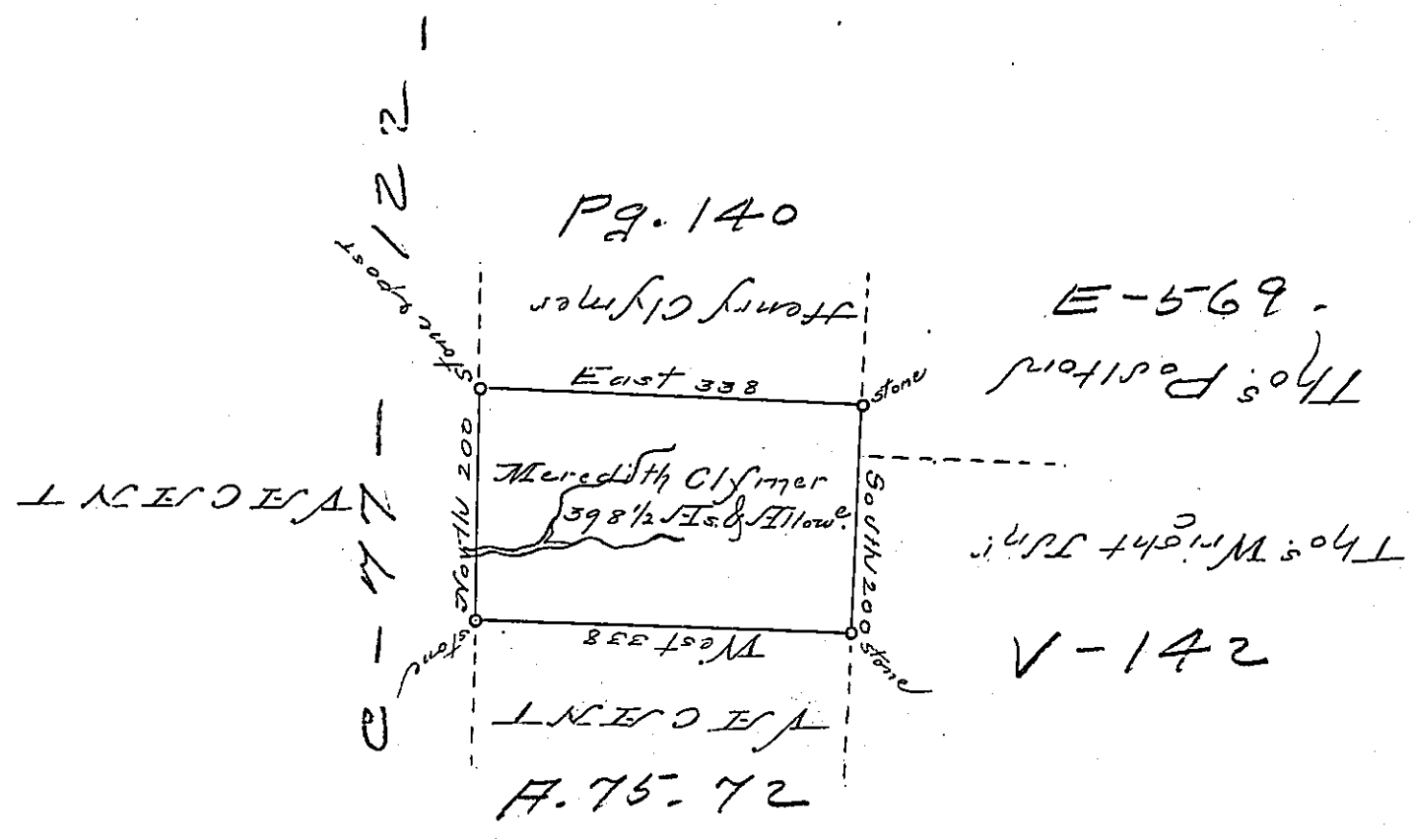


Foster -
Luzerne



Draft of a tract of land called
 Situated on the head Waters of Nescopeck Creek
 Joining land Surveyed for Henry Clymer &
 Tho. Wright Junr in Luzerne County containing
 three hundred and ninety Eight acres 1/2 Gallant
 of six Cent for roads &c.

Surveyed for Meredith Clymer the 30th Day
 of June 1792 in Pursuance of a Warrant dated
 the 4th Day of April 1792.

To
 Daniel Brodhead Esq^r } by Wm Gray Esq.
 Suror. Gen.

IN TESTIMONY that the above is a copy of the original remaining on file in the
 Department of Internal Affairs of Pennsylvania, made con-
 formably to an Act of Assembly approved the 16th day of
 February, 1833, I have hereunto set my Hand and caused
 the Seal of said Department to be affixed at Harrisburg, this
 — Third — day of — September — 1895.

James W. Patton
 Secretary of Internal Affairs.